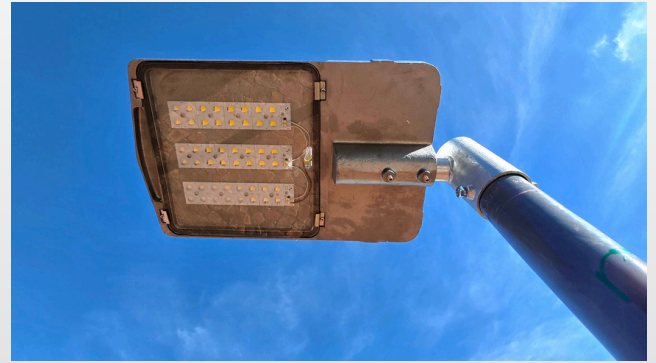




The AKEB is the culmination of bringing cutting edge electronic components and optics all into one unit. Offering excellent performance and superior photometrics, the AKEB is the perfect luminaire for any roadway project.



General Data

Housing	LM6 Die cast aluminium (EN 1706 AC-44100)
Diffuser	4mm Tempered Glass (high impact resistant)
Surge protection	10kV/kA 20kV/kA optional
Housing finish	Unpainted raw aluminium (powder coating optional)
Spigot entry	42mm side entry
Spigot entry depth	115mm
Nominal Voltage	198V - 240V 50/60Hz
Operating temperature	-35 °C to + 50 °C

Technical Data

Full product name	Luminous Flux	Efficacy	Weight	LED Lifetime
AKEB 80W LED Streetlight	12080	151lm/w	10.5kg	100,000hrs
AKEB 100W LED Streetlight	15407	154lm/w	11kg	100,000hrs
AKEB 120W LED Streetlight	20527	171lm/w	11.2kg	100,000hrs
AKEB 150W LED Streetlight	23110	154lm/w	11.5kg	100,000hrs
AKEB 180W LED Streetlight	26720	148lm/w	11.9kg	100,000hrs
AKEB 200W LED Streetlight	29001	145lm/w	12.1kg	100,000hrs
AKEB 220W LED Streetlight	32840	149lm/w	12.3kg	100,000hrs
AKEB 240W LED Streetlight	35904	149lm/w	12.6kg	100,000hrs
AKEB 280W LED Streetlight	37420	133lm/w	12.8kg	100,000hrs
AKEB 300W LED Streetlight	41325	137lm/w	13kg	100,000hrs
AKEB 320W LED Streetlight	42650	133lm/w	13kg	100,000hrs

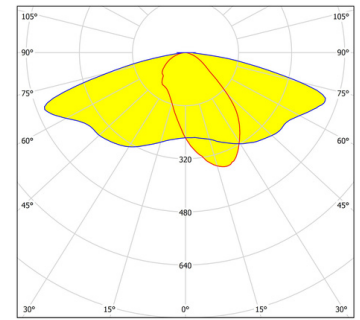
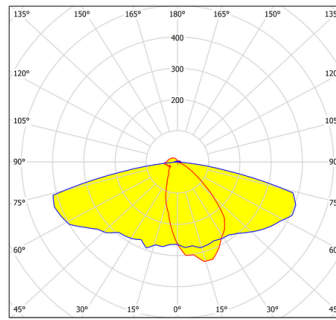
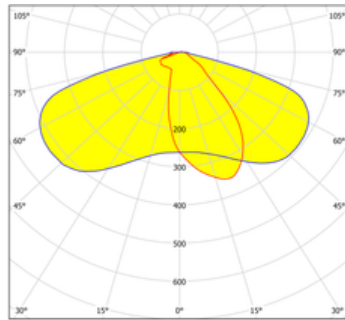
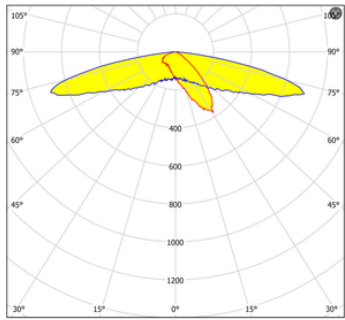
Polar curves

08001 Long pole

08002 Back cut off

08003 Highway

08004 Highway long pole



Ordering Data (*optional)

Colours: *Grey / *Black / *Green / *White / *Silver

CCT: *3000K / 4000K / *5000K / *5500K

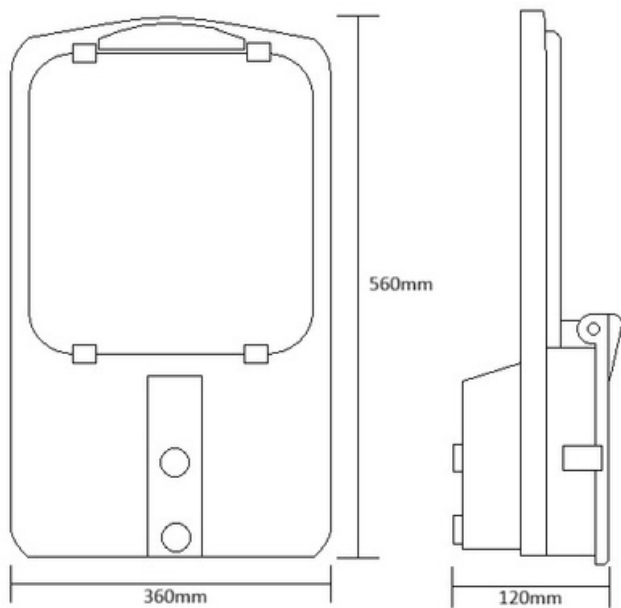
Features IP65 / Separate control gear compartment / Several optics available

Installation: 10m to 20m mounting height / 150mm to 1500mm outreach

Accessories: Smart-lighting management system / dimming functionality / NEMA 3/5/7 pin / DLS

Applications: Roadway lighting / Masts / Perimeter lighting / Security / Parks / Regional roads / Highways

Dimensions



Mounting instructions

- Ensure that the power has been disconnected from the pole
- Remove existing fitting if present
- Connect the 220V incoming line to the supplied "pigtail"
- Slip the luminaire over the pole
- Tighten the grub screws to no more than 9 nm
- Test the luminaire to ensure that it is functioning correctly
- **NB - This luminaire must be installed by an accredited and qualified electrician**

Locally manufactured *the images shown are for illustration purposes only and may not be an exact representation of the final product. 5 Year warranty (terms and conditions apply)